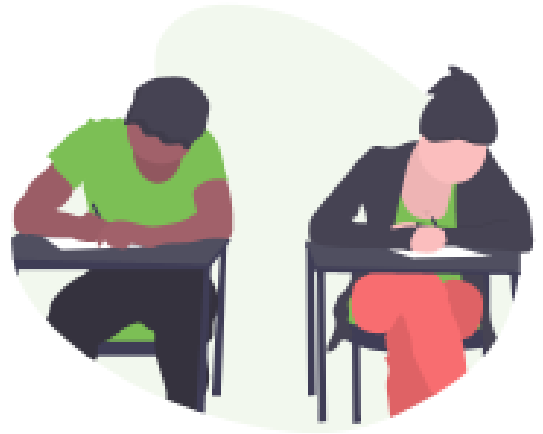


## Curriculum leaders: Embedding data into Teaching and Learning

This course is specifically for school leaders who wish to develop their knowledge of strategies using GO 4 Schools markbooks and statistics to embed data effectively across your school.



### COURSE DETAILS

Aimed at all levels of school leadership, this training course will focus on how the use of year group and subject statistics are influenced by approaches to tracking 'live' data in markbooks to better inform learning interventions.

Key aspects covered:

- Data outputs from KS3 to KS5; analysing KS3 assessment and progression to KS4/KS5 accountability
- Dashboards and Year group statistics
- Approaches to target setting and tracking key groups
- Using data explorers
- Using charts and interactive subject ribbons
- Setting up grading schemes and residual schemes to support tracking progress
- Triangulation of data
- Types of external data sets; FFT, ALPS, CATS and how they can be used in target setting KS2-KS4
- Tracking progress and how to evidence improvement—KS3 to KS5
- Template markbooks and assessment methodology tracked in markbooks.
- Using different markbook display outputs applicable to your assessments.

The session will include discussion and introduce skills to effectively use analysis tools in GO 4 Schools in a secondary school context.

A system healthcheck will also be completed on your school set up of GO 4 Schools to review following the training.

### DATES AND TIMES

We are running courses as online sessions using Microsoft Teams until January 2021.

In-house courses will be reviewed to comply to the most current guidance regarding COVID-19.

- **10 & 11 December 2020**      **10.00 – 12.00 [2 x 2 hours online training sessions — Thursday and Friday]**
- **27 & 28 January 2021**      **10.00 – 12.00 [2 x 2 hours online training sessions — Wednesday and Thursday]**

**More dates will be added if this course is requested by customers.**

The course is also available to book exclusively for your school and is suitable for all levels of leadership.

## COSTS AND BOOKING DETAILS

First delegate: £120; Second delegate: £90. All prices are subject to VAT.

This course is also included in our course bundle offer of booking 3 half day courses for £300 per delegate.

Places are limited to a maximum of two delegates per school.

Please complete the booking form to secure your place.

Email: [events@go4schools.com](mailto:events@go4schools.com) or Tel: **01223 967556**

## EQUIPMENT

- For online training we use Microsoft Teams, we suggest delegates have access to a laptop with a camera and microphone to be fully engaged in the sessions.
- For in-house courses please bring your own laptop as there will be practical time to view and amend your own school set up. Proxy settings need to be checked in advance so that we can provide you with access to our guest wi-fi.

Full details will be sent to delegates at the point of booking.

## GO 4 SCHOOLS TRAINING EVENTS

Our training events are developed with the ethos of 'Working together' — sharing knowledge and confidence in school data to ensure a 'best practice' approach and maximum value.

### Current training offers include:

- Start and end of academic year set up for Data managers
- Induction for new Data managers or those new to managing GO 4 Schools.
- Set up and use of markbooks
- Analysing data for Data manager, senior leadership and data teams
- Effective use of Behaviour and attendance modules
- Post-16 data analysis

See our website for more details: [www.go4schools/CPD](http://www.go4schools/CPD)

## FURTHER INFORMATION

For additional information about your GO 4 Schools training or consultancy please contact the Customer services team.

Face to face training is based at our Cambridge office:

Hyperspheric solutions Ltd  
Compass House, Vision Park,  
Chivers Way, Histon,  
Cambridge CB24 9AD

Telephone: 01223 967556 Email: [enquiries@go4schools.com](mailto:enquiries@go4schools.com)



Follow us @GO4SchoolsHSL



[Facebook.com/triangulatedata](https://www.facebook.com/triangulatedata) - Data Managers | Senior Leaders groups