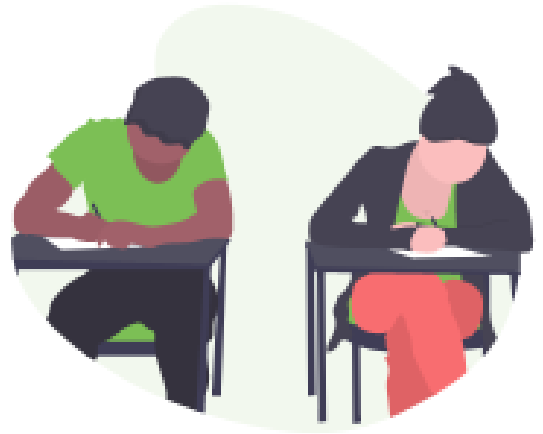


## Pastoral leaders:

### Attendance and behaviour

This course is specifically for schools that are new users of the behaviour and/or the attendance modules or want to review their set up and processes using GO 4 Schools.



#### COURSE DETAILS

Aimed at Senior leaders or Data managers with a responsibility for attendance and behaviour data across their school, we aim to develop your understanding of how you can use GO 4 Schools to proactively track and monitor your school pastoral data to support effective interventions that support your students.

Key aspects covered:

- Review of your set up and implementation of behaviour and attendance.
- Using the behaviour and attendance explorers to view details by date range, tutor group, house and year groups
- View in-group and student variations in behaviour events alongside assessment and attendance data.
- Using behaviour charts to analyse patterns and monitor impact of intervention on focus groups
- The Key Stage attendance summary pages and how to use them, especially with the persistent absentees and focus groups
- Using lesson attendance explorers to identify where students have high absence
- How to disseminate behaviour/attendance information to all staff
- Strategies for communicating behaviour/attendance data to parents/students
- Triangulation of behaviour, attendance and attainment for an individual student or groups.

A system health check is completed for all attending schools with advice on your set up. Time will be given for delegates to discuss and share ideas of how they are using GO 4 Schools.

#### DATES AND TIMES

We are running courses as online sessions using Microsoft Teams until September 2022. .

- **21st, 22nd & 23rd September 2021** 10.00– 12.00 (3 x 2 hours online training sessions — Tuesday—Thursday)
- **28, 29, & 30th June 2022** 10.00—12.00 (3 x 2 hours online training sessions — Tuesday—Thursday)

**Behaviour manager** access is required, **School manager** and **Attendance officer** are recommended for this course.

The course is also available to book exclusively for your school and is suitable for all levels of leadership.

## COSTS AND BOOKING DETAILS

£250. All prices are subject to VAT.

Places are limited to a maximum of two delegates per school.

Please complete the booking form to secure your place.

Email: [events@go4schools.com](mailto:events@go4schools.com) or Tel: **01223 967556**

## EQUIPMENT

- For online training we use Microsoft Teams, we suggest delegates have access to a laptop with a camera and microphone to be fully engaged in the sessions.
- For in-house courses please bring your own laptop as there will be practical time to view and amend your own school set up. Proxy settings need to be checked in advance so that we can provide you with access to our guest wi-fi.

Full details will be sent to delegates at the point of booking.

## GO 4 SCHOOLS TRAINING EVENTS

Our training events are developed with the ethos of 'Working together' — sharing knowledge and confidence in school data to ensure a 'best practice' approach and maximum value.

### Current training offers include:

- End and start of academic year set up for Data managers
- Induction for new Data managers or those new to managing GO 4 Schools.
- Set up and use of markbooks
- Analysing data for Data manager, senior leadership and data teams
- Effective use of Behaviour and attendance modules
- Post-16 data analysis

See our website for more details: [www.go4schools/CPD](http://www.go4schools/CPD)

## FURTHER INFORMATION

For additional information about your GO 4 Schools training or consultancy please contact the Customer services team.

Face to face training is based at our Cambridge office:

Hyperspheric solutions Ltd  
Compass House, Vision Park,  
Chivers Way, Histon,  
Cambridge CB24 9AD

Telephone: 01223 967556 Email: [enquiries@go4schools.com](mailto:enquiries@go4schools.com)



Follow us @GO4SchoolsHSL



[Facebook.com/triangulatedata](https://www.facebook.com/triangulatedata) - Data Managers | Senior Leaders groups